



**MATCO**

**MATCO**

GENERAL TRADING FZE

---

**PREMIUM REFRACTOR SOLUTIONS**

# About Our Company



## MATCO GENERAL TRADING FZE

MATCO GENERAL TRADING FZE was established in 2008 aiming to perform end- to-end trading, technical activities and professional services in Dubai, UAE one of the most famous trading hubs in the world.

As a Refractory full service solution supplier to tailor the best solution for our customers, we supply over 50 types of Refractory products. The range from Refractory Raw materials such as bauxite, DBM, FM, SIC, Tabular Alumina, White fused Magnesia, Alumina Spinel, BFA, WFA, Mullite, Alumina Cement to the bricks and flow control products such as Slide Gate, Nozzle, Purging Plug, Stopper, Shroud , Masses and etc.

Every year we handle over 100,000 metric Tons of products to our customers all over the world. The more closely we work with our customers, the greater difference we can make for them. Our experienced experts and strong technical team support, with their open mind, keep making innovation and improvements for our customers with new technology.

Saving more purchasing costs for customers is growing in our mind, Therefore we cut every unnecessary cost for our customers to help them make smarter economical choices.

Customer-focused policy works as a driving force to keep pushing us to be more efficient in the Refractory industry. It helps us focus better to understand the concerns and work to be alert to new thinking and ideas that enable us to deliver better advice, service and solutions to our customers.

We are always looking forward to build strong bonds with our customers, to provide change, benefit and better opportunities for them.





## Calcined Bauxite



ITEM	PKP-CB75	PKP-CB80	PKP-CB85	PKP-CB86	PKP-CB87	PKP-CB88	PKP-CB90
$\text{Al}_2\text{O}_3(\%) \geq$	75	80	85	86	87	88	90
$\text{Fe}_2\text{O}_3(\%) \leq$	3.0	3.0	2.0	2.0	2.0	1.8	1.8
$\text{TiO}_2(\%) \leq$	4.0	4.0	4.0	4.0	4.0	4.0	4.0
$\text{K}_2\text{O} + \text{Na}_2\text{O}(\%) \leq$	0.30	0.30	0.30	0.30	0.30	0.25	0.25
$\text{CaO} + \text{MgO}(\%) \leq$	0.5	0.5	0.5	0.5	0.5	0.5	0.5
Bulk Density ( $\text{g}/\text{cm}^3$ ) $\geq$	2.70	2.80	3.0	3.15	3.25	3.25	3.30
SIZE	0-1mm, 1-3mm, 3-5mm, 5-8mm, according to customer's requirement						

# Dead Burned Magnesite



ITEM	PKP-DBM89	PKP-DBM90	PKP-DBM91	PKP-DBM92	PKP-DBM93	PKP-DBM94	PKP-DBM95	PKP-DBM96	PKP-DBM97	PKP-DBM98
MgO(%)≥	89	90	91	92	93	94	95	96	97	98
LOi(%)≤	0.7	0.5	0.5	0.5	0.5	0.5	0.5	0.3	0.3	0.3
SiO <sub>2</sub> (%)≤	6.0	5.0	5.0	4.5	4.5	3.0	2.0	1.5	0.75	0.75
Fe <sub>2</sub> O <sub>3</sub> (%)≤	2.5	2.3	2.0	2.0	1.5	1.5	1.5	1.5	1.2	1.0
Al <sub>2</sub> O <sub>3</sub> (%)≤	1.5	1.0	1.0	1.0	1.0	0.8	0.8	0.5	0.5	0.5
CaO(%)≤	3.5	3.0	2.8	2.5	2.5	2.0	2.0	2.0	1.5	1.5
Bulk Density (g/cm <sup>3</sup> )≥	3.08	3.10	3.12	3.16	3.18	3.18	3.20	3.20	3.30	3.30
SIZE	0-1mm,0-3mm,1-15mm,1-30mm,200mesh or according to customer's requirement									



## Fused Magnesite



ITEM	PKP-FM96	PKP-FM97	PKP-FM98
MgO(%)≥	96	97	98
SiO <sub>2</sub> (%)≤	1.2	0.8	0.6
Fe <sub>2</sub> O <sub>3</sub> (%)≤	0.8	0.6	0.5
Al <sub>2</sub> O <sub>3</sub> (%)≤	0.2	0.2	0.2
CaO(%)≤	1.5	1.2	0.9
Bulk Density (g/cm <sup>3</sup> )≥	3.30	3.45	3.45
SIZE	0-1mm,0-3mm,1-15mm,1-30mm,200mesh or according to customer's requirement		

# Large Crystal Fused Magnesite



ITEM	PKP-LCFM97.0	PKP-LCFM97.5	PKP-LCFM97.8	PKP-LCFM98.0	PKP-LCFM98.5	PKP-LCFM99.0
MgO(%)≥	97.15	97.51	97.8	98.10	98.51	99.02
SiO <sub>2</sub> (%)≤	0.60	0.50	0.48	0.40	0.30	0.19
Fe <sub>2</sub> O <sub>3</sub> (%)≤	0.61	0.56	0.50	0.40	0.32	0.22
Al <sub>2</sub> O <sub>3</sub> (%)≤	0.20	0.13	0.12	0.10	0.17	0.05
CaO(%)≤	1.29	1.20	1.02	0.90	0.71	0.40
Bulk Density (g/cm <sup>3</sup> )≥	3.50	3.50	3.50	3.50	3.50	3.50
SIZE	0-30mm,0-60mm					



## White Fused Alumina



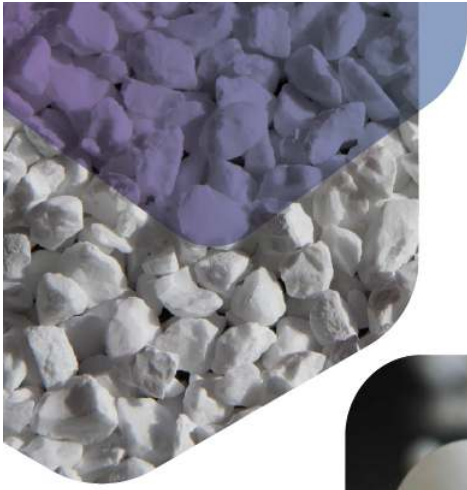
ITEM	ABRASIVES GRADE				REFRACTORY GRADE	
	GRAIN			MICRO POWDER	GROUP SIZE	FINE POWDER
$\text{Al}_2\text{O}_3(\%) \geq$	99	99	99	98.5	99	99
$\text{Fe}_2\text{O}_3(\%) \leq$	0.05	0.06	0.08	0.1	0.1	0.1
$\text{SiO}_2(\%) \leq$	0.26	0.28	0.30	0.40	0.35	0.35
$\text{TiO}_2(\%) \leq$	0.08	0.09	0.10	0.15	0.3	0.3
SIZE	12-80	90-150	180-220	240-4000	0-1mm 1-3mm 3-5mm 5-8mm	-180mesh -200mesh -240mesh -320mesh

# Brown Fused Alumina

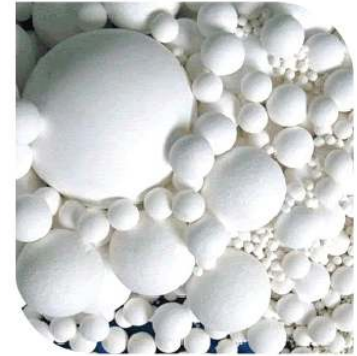


ITEM	ABRASIVES GRADE				REFRACTORY GRADE	
	GRAIN			MICRO POWDER	GROUP SIZE	FINE POWDER
	BFA-95	BFA-94	BFA-93	BFA-92.5	BFA-94.5	BFA-93.5
$Al_2O_3(\%) \geq$	95	94	93	92.5	94.5	93.5
$Fe_2O_3(\%) \leq$	0.3	0.3	0.3	0.5	0.3	0.5
$SiO_2(\%) \leq$	1.5	1.5	1.5	1.8	1.5	1.5
$TiO_2(\%) \leq$	3.0	3.0	3.5	4.0	3.0	3.5
SIZE	12-80	90-150	180-220	240-4000	0-1mm 1-3mm 3-5mm 5-8mm	-180mesh -200mesh -240mesh -320mesh



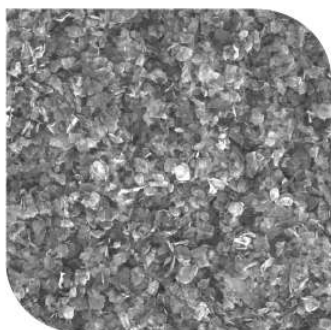


## Tabular Alumina



ITEM	TA-Ball	TA-Particle	TA-Powder
$\text{Al}_2\text{O}_3(\%) \geq$	96	97	98
$\text{Na}_2\text{O}(\%) \leq$	1.2	0.8	0.6
$\text{SiO}_2(\%) \leq$	0.8	0.6	0.5
$\text{Fe}_2\text{O}_3(\%) \leq$	0.2	0.2	0.2
Bulk Density ( $\text{g}/\text{cm}^3$ ) $\geq$	3.30	3.45	3.45
Apparent Porosity (%)	1.5	1.2	0.9
Water Absorption (%)	3.30	3.45	3.45
Size		5-10mm, 3-6mm 3-1mm, 1-0mm 0.5-1mm, 0.2-0.6mm	-45 $\mu\text{m}$ (-325mesh) -30 $\mu\text{m}$ (-500mesh)

# Graphite Flake



ITEM	PKP-GF895	PKP-GF195
Size	Remain on 80 MESH $\geq$ 80	Remain on 100 MESH $\geq$ 80
Fixed Carbon( $\geq$ )	95	95
Ash( $\leq$ )	4	4
Volatile( $\leq$ )	1	1
Moisture( $\leq$ )	0.5	0.5



## Black SiC



ITEM	ABRASIVES GRADE				REFRACTORY GRADE	
	GRAIN			MICRO POWDER	GROUP SIZE	FINE POWDER
SiC(%)≥	98	97	97	96	97	97
F.C(%)≤	0.20	0.30	0.30	0.35	0.35	0.35
Fe <sub>2</sub> O <sub>3</sub> (%)≤	0.6	0.8	1.2	1.35	1.35	1.35
SIZE	12-80	90-150	180-220	240-4000	0-1mm 1-3mm 3-5mm 5-8mm	-180mesh -200mesh -240mesh -320mesh

## Green SiC



ITEM	ABRASIVES GRADE				REFRACTORY GRADE	
	GRAIN			MICRO POWDER	GROUP SIZE	FINE POWDER
SiC(%)≥	99	98.5	97.5	96	99	98
F.C(%)≤	0.25	0.25	0.25	0.30	0.35	0.35
Fe <sub>2</sub> O <sub>3</sub> (%)≤	0.2	0.5	0.7	0.8	0.7	0.7
SIZE	12-80	90-150	180-220	240-4000	0-1mm 1-3mm 3-5mm 5-8mm	-180mesh -200mesh -240mesh -320mesh



## Sintered Magnesia-Alumina Spinel



ITEM	PKP-SMAS1	PKP-SMAS2
Al <sub>2</sub> O <sub>3</sub> (%)	64-66%	74-76%
MgO(%)	32-34%	21-23%
CaO(%)	0.8-0.85%	<0.7%
SiO <sub>2</sub> (%)<	0.5%	0.5%
Fe <sub>2</sub> O <sub>3</sub> (%)<	0.5	0.5
Bulk Density (g/cm <sup>3</sup> )≥	3.25	3.25

## Fused Magnesia-Alumina Spinel



ITEM	PKP-FMAS60	PKP-FMAS70
Al <sub>2</sub> O <sub>3</sub> (%)	63-68%	71-76%
MgO(%)	31-35%	22%
CaO(%)	0.8%	0.65%
SiO <sub>2</sub> (%)<	0.5%	0.4%
Fe <sub>2</sub> O <sub>3</sub> (%)<	0.5%	0.4%
Bulk Density (g/cm <sup>3</sup> )≥	3.30	3.30



## Green Chrome Oxide



ITEM	TEST RESULT
$\text{Cr}_2\text{O}_3$	99 % Min
$\text{SiO}_2$	0.2% Max
$\text{Fe}_2\text{O}_3$	0.2% Max
$\text{K}_2\text{O}$	0.01% Max
$\text{Na}_2\text{O}$	0.13% Max
D50 ( $\mu\text{m}$ )	2.19
MOISTURE	0.14
L.O.I	0



# MATCO

---

**We specialize in  
Refractory Raw Materials  
and Finished Products in  
steel, Ceramic and  
Polishing industry.**

## **MATCO GENERAL TRADING FZE**

---

 OFFICE NO: FZJOB1016, JAFZA ONE,  
JEBEL ALI FREE ZONE, DUBAI, UAE

 [info@matcofze.com](mailto:info@matcofze.com)  
 [www.matcofze.com](http://www.matcofze.com)

 971-543543540